

StarBoard Quick Start

Getting Started





1. If you do not see the StarBoard tool palette on the right side of the desktop then you will need to start it manually.

1. Click on the **StarBoard icon** in the lower, right section of the screen () or go to **Start > Programs > StarBoard Software**.




2. You will receive an error message stating "**StarBoard is not connected. Please restart the program after connecting StarBoard**". Just click **OK** and ignore the message.
3. The StarBoard tool palette should now appear on the desktop.

Drawing on a Website

1. Make sure the **StarBoard tool palette** is open on the desktop (if not see "Getting Started" above).
2. Using the browser of your choice open a webpage.
3. Pick up the **Pen Stylus** (found in the black box in the keyboard drawer of the desk) and click the pen top like you would a regular pen. This turns it on.
4. When you are ready to write, click on the **Pen tool** () from the **StarBoard tool palette**.
5. Choose your **pen color** from the preset colors (). You can also choose from other **colors** and pen **widths** by clicking on the color and width icons ().
6. Using the **Pen Stylus**, begin to write directly on the StarBoard monitor. You should see penlike color appear on the screen. This will automatically take a snapshot of what was in the browser and put it into the StarBoard Notebook.
7. To stop writing and use the **Pen Stylus** as a mouse, click on the **mouse** icon (). This will take you out of the StarBoard Notebook software.



Using the StarBoard with a PowerPoint Presentation

1. Make sure the **StarBoard tool palette** is open on the desktop (if not see "Getting Started" above).
2. Pick up the **Pen Stylus** (found in the black box in the keyboard drawer of the desk) and click the pen top like you would a regular pen. This turns it on.
3. Click on the **Document** tool ()



4. From the next window, click on **PowerPoint document**



5. Choose the presentation you wish to show and click Open or OK. The presentation should appear within the StarBoard Notebook software.

6. To advance to the next slide click on the **Next** tool (). To go to a previous slide click on the **Previous** tool (.


7. To write on a PowerPoint slide, click on the **Pen tool** () from the **StarBoard tool palette**.

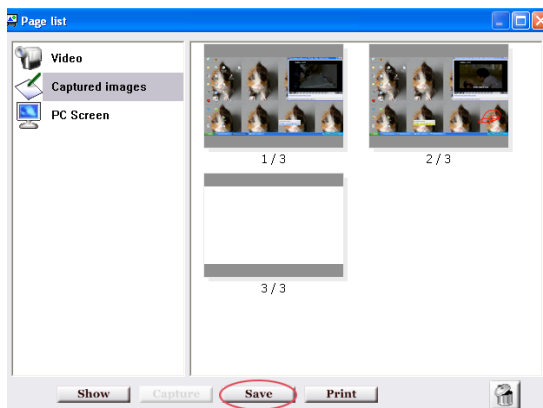
8. Choose your **pen color** from the preset colors (). You can also choose from other **colors** and pen **widths** by clicking on the color and width icons (.

9. Using the **Pen Stylus**, begin to write directly on the StarBoard monitor. You should see penlike color appear on the screen.

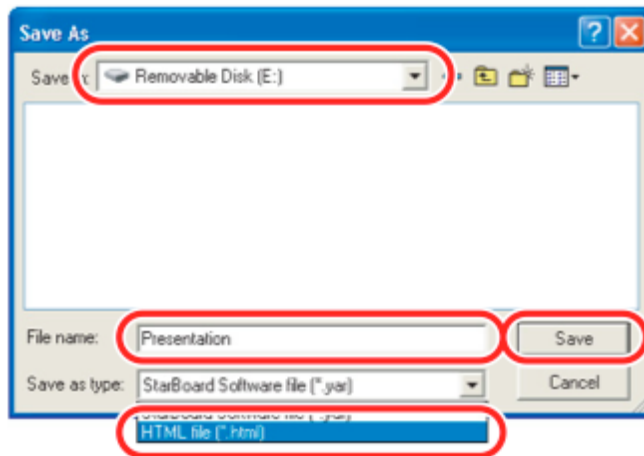
10. To save your files see "Saving StarBoard Notebook Files" below.

Saving StarBoard Notebook Files

1. From the **StarBoard tool palette**, choose the **List** tool (.
2. From the Page list window click on the **Save** button.



3. From the dropdown menu choose from the following:
 1. **Save** - allows you to save the file as a .yar file which requires the StarBoard Notebook software to view or change.
 2. **Export to** - allows you to export the file as an **html** (web) page. It will save a file and a folder of images. NOTE: if you want to post the webpage on the web or on WebCT, you will need to put both the file and the folder on the server.









Basic Tool Palette

The Basic Tool Palette is shown when you are in mouse or computer mode.

Your default tool palette may look different than this one but the basic tools should be the same. When the tool is selected the pen will do the following:



- 
 • **PC** - operates the computer as a **mouse** would.
- 
 • **Pen** - allows you to **draw**. Also will take a snapshot of whatever is on the computer screen and opens the SmartBoard Notebook.
- 
 • **Intelli-pen** - allows you to **draw "smart" shapes**. These include straight lines, circles, ovals, rectangles, squares and triangles. Also will take a snapshot of whatever is on the computer screen and opens the SmartBoard Notebook.
- 
 • **New page** - when in SmartBoard Notebook it will create a **new page**. Also will open the SmartBoard Notebook with a blank page.
- 
 • **Document** - allows you to **open any Office file, image, video or SmartBoard Notebook template** in the SmartBoard Notebook. Also automatically opens the SmartBoard Notebook.
- 
 • **List** - allows you to see everything that you have is in your SmartBoard Notebook. Also where you go to **Save** or **Export** a document.

Expanded Tool Palette

The Expanded Tool Palette is shown when you are in the SmartBoard Notebook.

Your expanded tool palette may look different than this one but the basic tools should be the same. When the tool is selected the pen will do the following:



- The tools from the Basic Tool Palette will also appear in the Expanded Tool Palette.



- **Previous** - when in SmartBoard Notebook it allows you to view **previous captures** or "whiteboard" windows.



- **Next** - when in SmartBoard Notebook it allows you to view the **next** "whiteboard" window.



- **Eraser** - acts as an eraser to erase all pen drawn objects. Note: it will not erase objects drawn with the intellipen.



- - the color that is selected will be the color of the pen or intellipen. Note: the last two are highlighter colors.



- **Width Palette** - these tools allow you to change the line width or color of any pen or intellipen object. Note: the Palette icon gives you access to many more colors and patterns than the ones above.

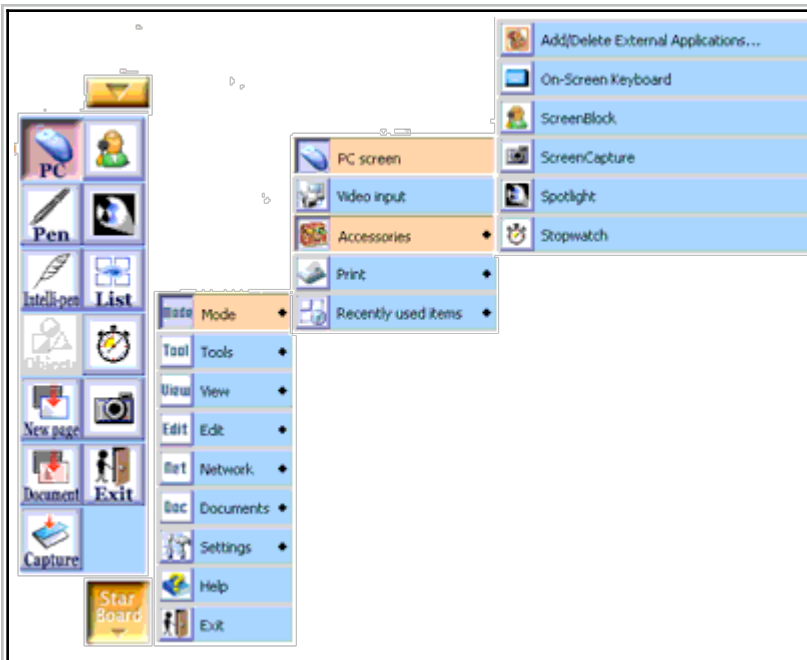


- **Exit** - exits the StarBoard software.

Complete Tool Palette Structure

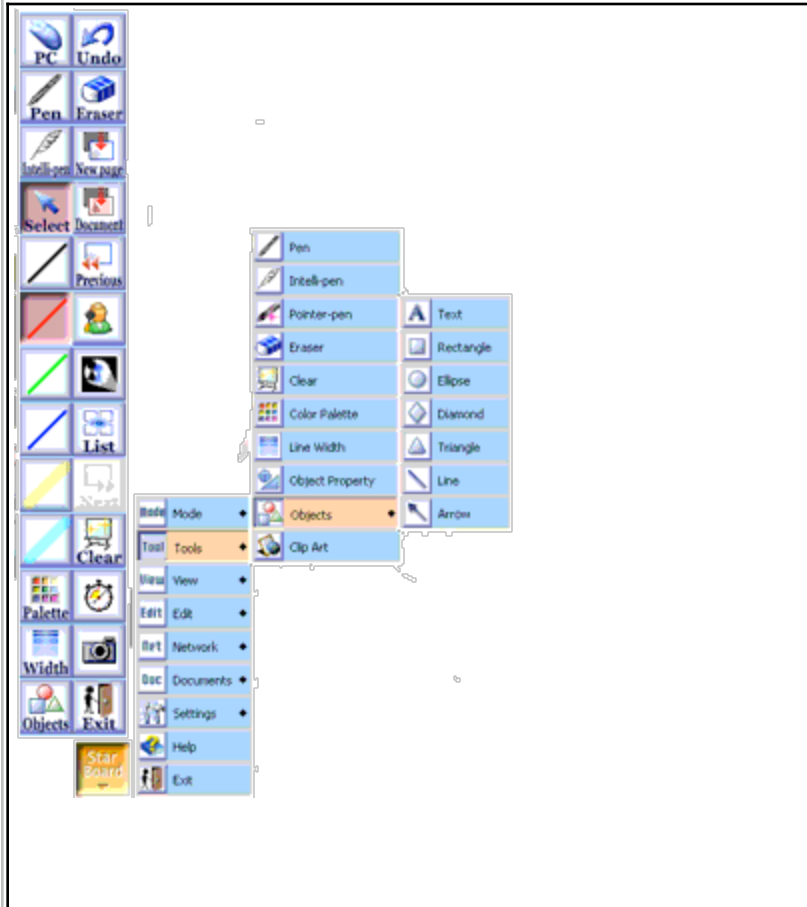
The StarBoard software comes with many more tools than you see on the StarBoard Tool Palette. To access them click on the gold StarBoard icon at the bottom of the tool palette.

To add one of these tools to your tool bar, single-click it and drag it into your StarBoard Tool Palette.



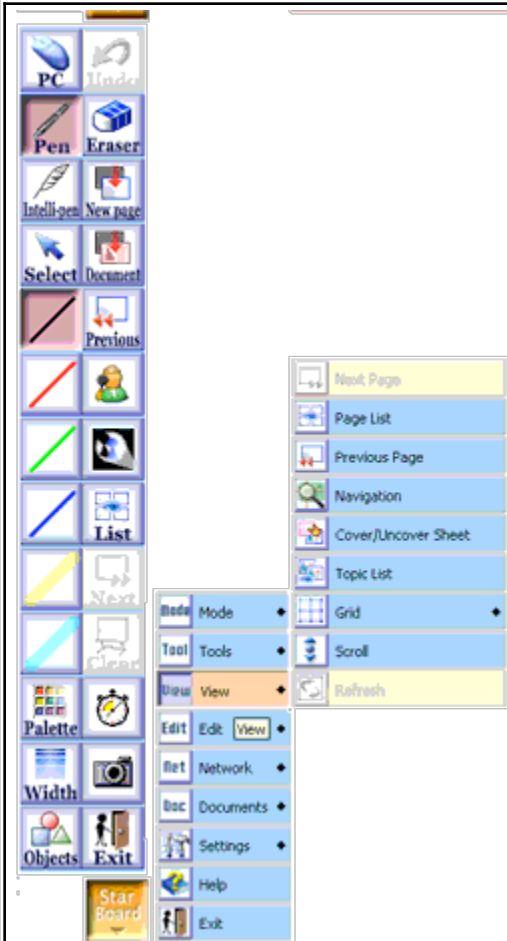
The **Mode** area contains the following tools you may use:

- **Mouse mode** (PC screen)
- Accessories
 - **On-screen keyboard**
 - **Screenblock** (like the piece of paper on an overhead)
 - **Spotlight** allows you to focus and zoom
 - **Stopwatch** - count up or countdown clock



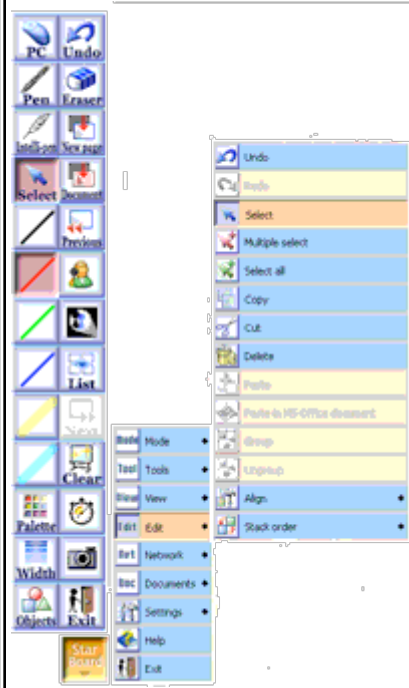
The **Tools** area contains the following tools you may use:

- **Pen**
- **Intelli-pen**
- **Pointer-pen**
- **Erase**
- **Clear** screen
- **Color Palette**
- **Line Width**
- **Objects**
 - **Text** box
 - **Rectangle**
 - **Ellipse**
 - **Diamond**
 - **Triangle**
 - **Line**
 - **Arrows**
- **Clip Art**



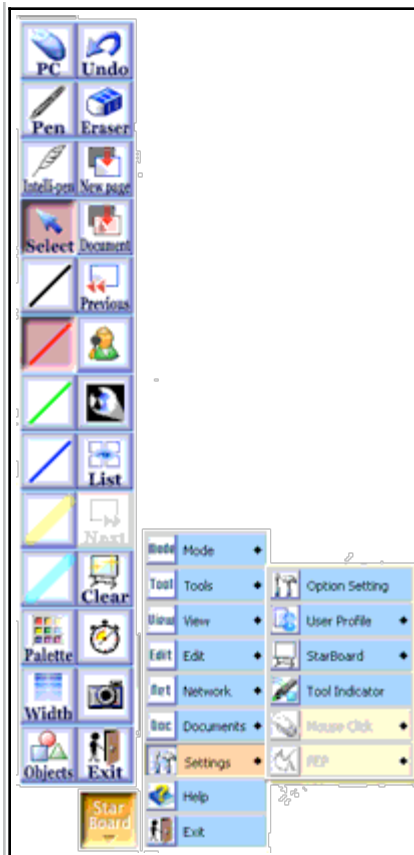
The **View** area contains the following tools you may use:

- **Page List**
- **Previous Page**
- **Next Page**
- **Grid**



The **Edit** area contains the following tools you may use:

- **Undo**
- **Redo**
- **Select** - allows you to select an object and change it, rotate it and delete it.
- **Select all**
- **Copy**
- **Paste**
- **Delete**
- **Align**
- **Group**



The **Settings** area contains the following tools you may use:

- **Option Setting** - allows you to change the size of the StarBoard Tool Palette
- **User Profile** - allows you to save your toolbar settings to a flash drive so you can take them with you to any computer.